

iTERO® DIGITAL IMPRESSION SYSTEM BIOMET 3i DIGITAL IMPLANT WORKFLOW

BIOMET 3i Can Deliver Increased Efficiency

- Two-visit implant restoration
- Digital BellaTek® Encode® Impression System
- One-step implant workflow
- No parts and pieces reduce inventory costs and needs
- BellaTek Encode Healing Abutments provide essential information for abutment design and milling, which can lead to more predictable patient outcomes

Breakthrough Digital Technology Delivers Exceptional Image Accuracy

- 100% powder-free scanning at time of surgery
- No hovering – The iTero wand can be rested on teeth for easy scanning
- Substantially reduces the seating appointment

iTero Can Deliver Increased Efficiency

- iTero virtually eliminates the cost and hassle of traditional impressions
- iTero gives you the flexibility to choose the treatment and laboratory that are right for your patients



FOR MORE INFORMATION, PLEASE VISIT:
www.itero.com or www.biomet3i.com

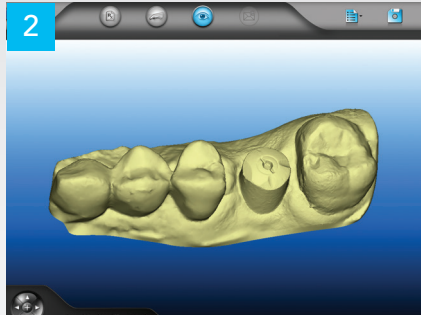
iTero®

BellaTek® Encode® Impression System Digital Implant Workflow using the iTero® Intraoral Scanner

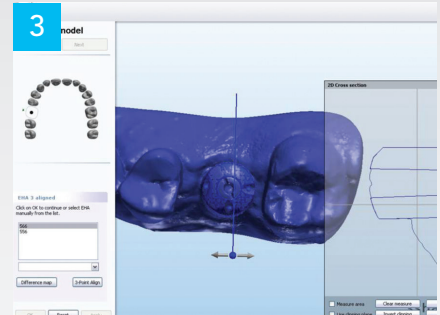
- The iTero digital impression captures an intraoral scan of BellaTek Encode Healing Abutments, which initiates the BIOMET 3i digital implant workflow.
- Embedded BellaTek codes indicate the implant depth, hex orientation, platform connection and connection type (Certain® Internal Connection or External Hex Connection) to design and mill the definitive abutment at BIOMET 3i.



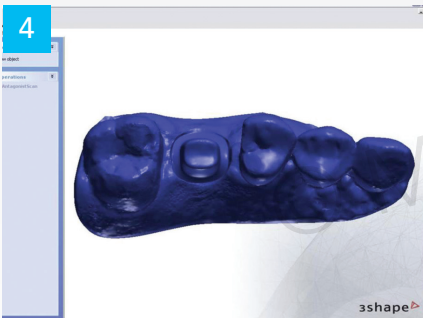
1 BellaTek Encode Healing Abutment placed intraorally for scanning



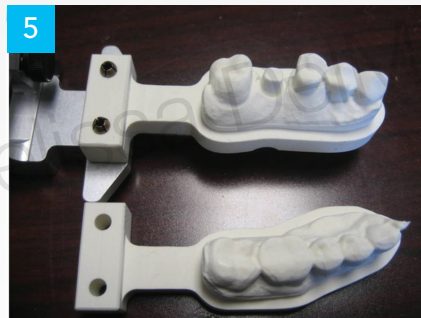
2 Powder-free iTero digital impression captured



3 iTero digital impression STL imported by the dental laboratory into CAD software



4 BellaTek Custom Abutment designed and fabricated by BIOMET 3i and exported to Align Technology for model fabrication



5 iTero models milled with removable die and adjacent crown preparation dies



6 Restoration fabricated by dental lab



7 Restoration fit verified on milled die and abutment



8 BellaTek Custom Abutment placed



9 Final restoration placed immediately following the abutment

